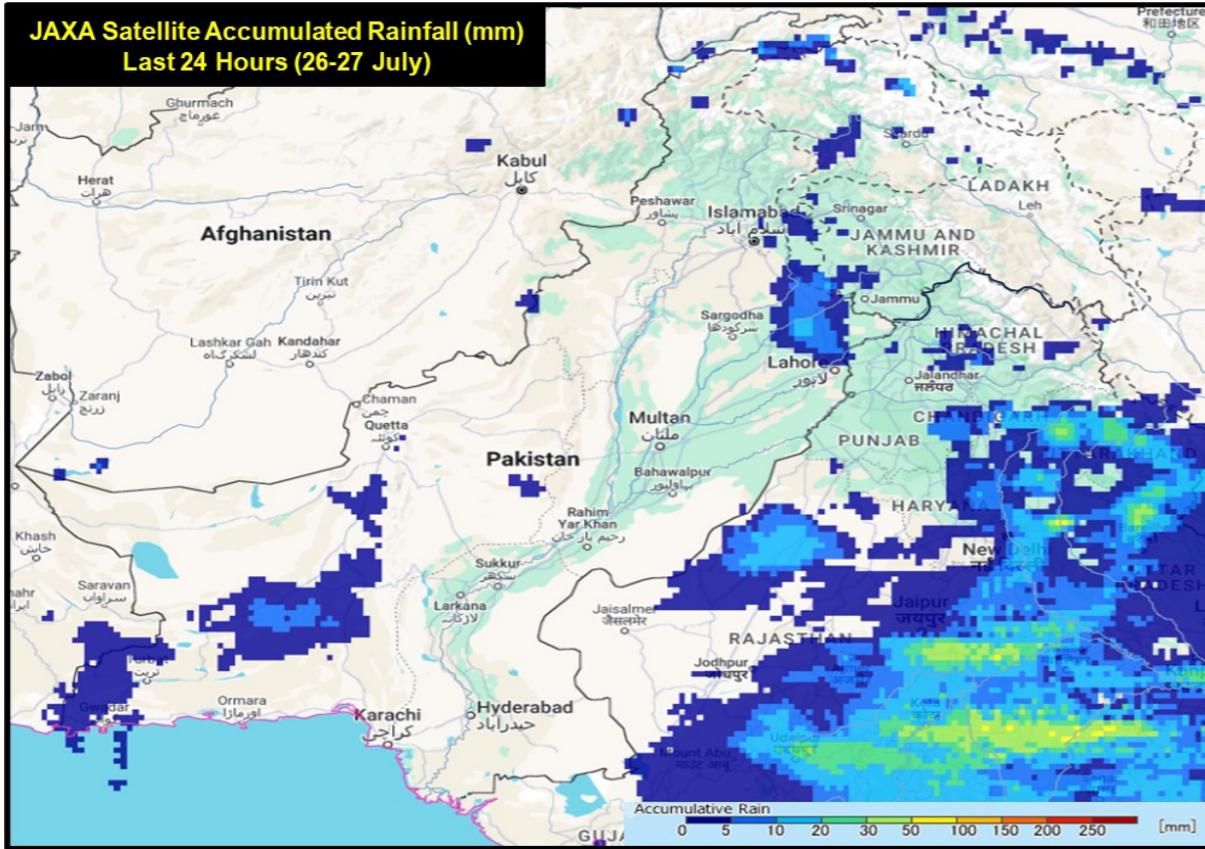
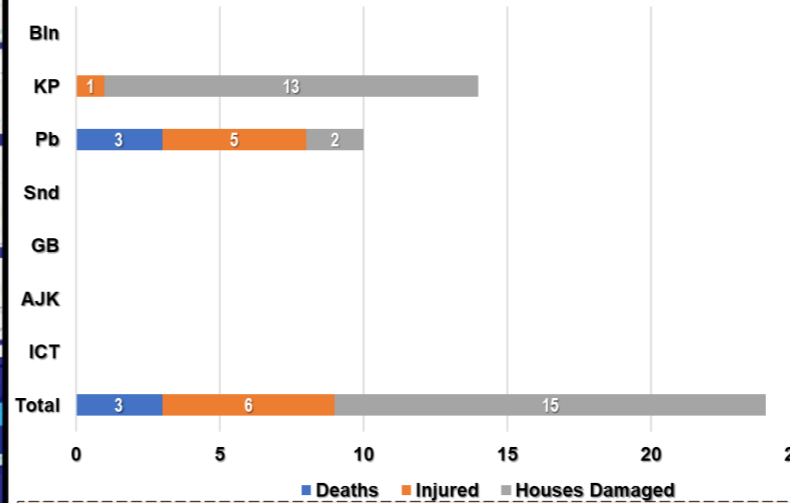




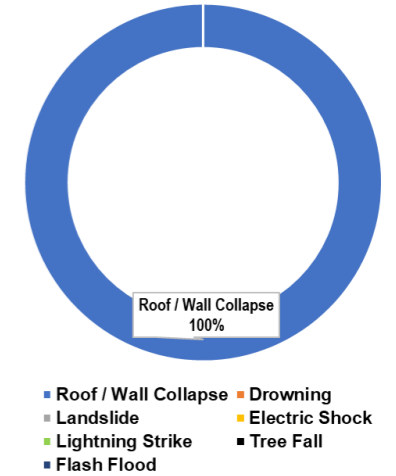
# NDMA MONSOON 2024 UPDATE NO. 027 (27 JUL - 1330 HRS)



### Losses & Damages Last 24 Hours



### Last 24 Hrs Deaths Categorization



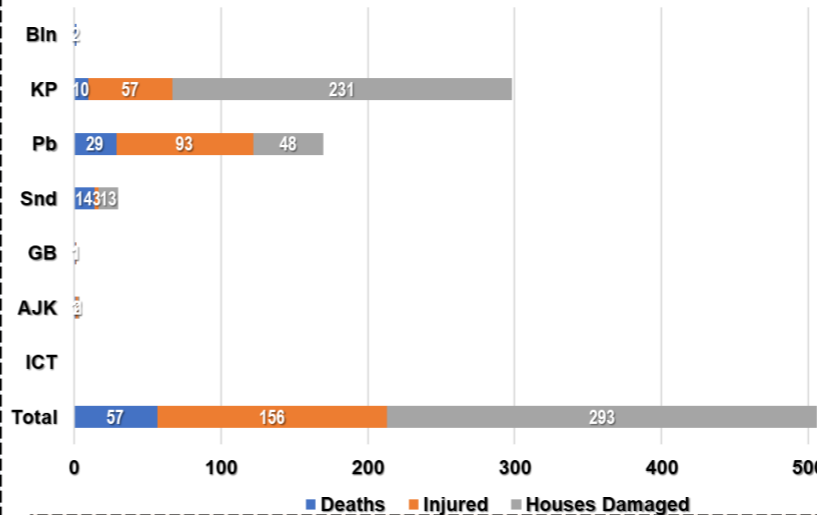
NTR

### TOP RAINFALL RECORDED LAST 24 HOURS (MM)

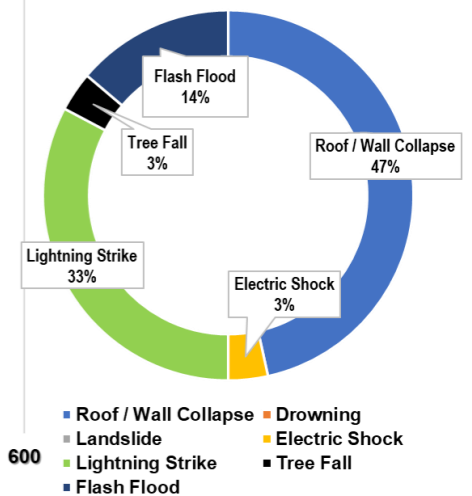
- Balochistan.** Nil
- Khyber Pakhtunkhwa.** Balakot 5
- Punjab.** Gujranwala **71**, Sialkot 20, Gujrat 18, Murree 16, Narowal 12
- Sindh.** Nil
- Gilgit-Baltistan.** Nil
- State of AJ&K.** Kotli 20, Dhulli 13, Garhi Dupatta 4, Rawalakot 2, Panjera 2, Barnala 1
- ICT.** Nil

Data Source: PMD / FFD

### Cumulative Losses & Damages (1-27 Jul)

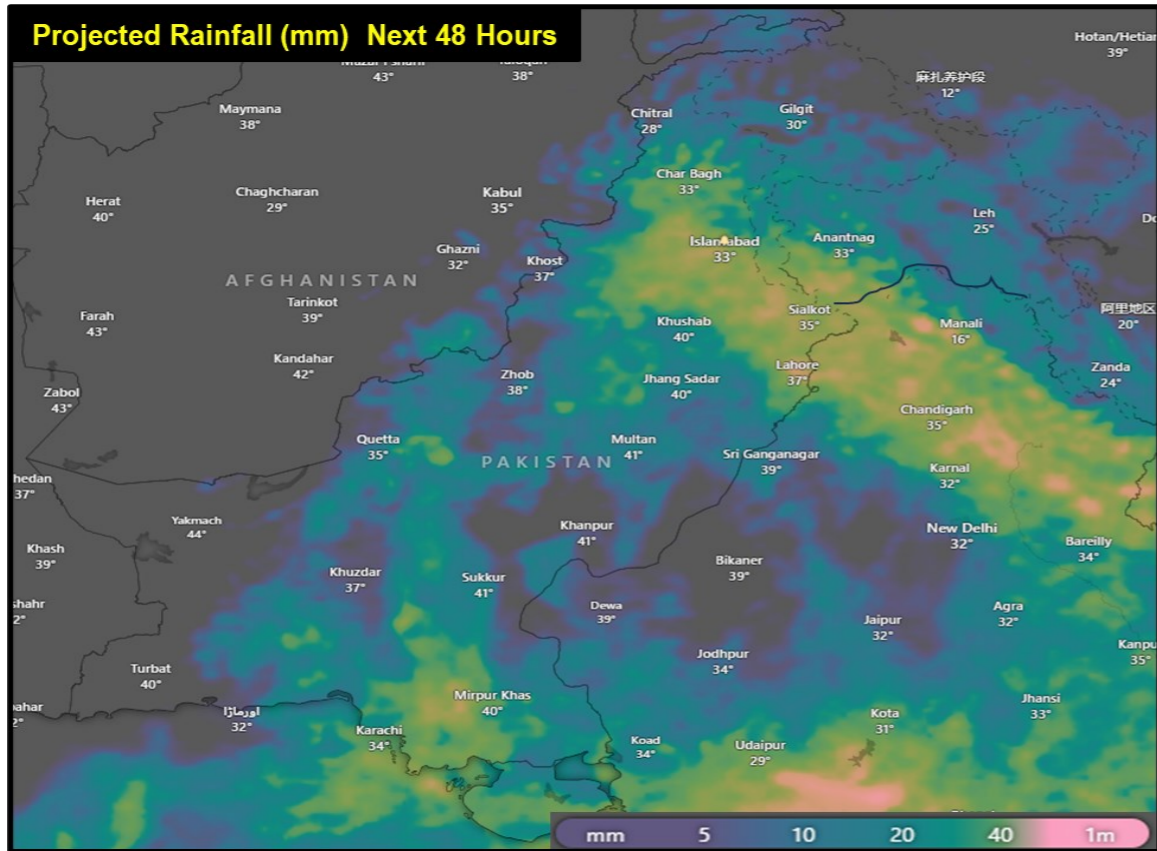


### Cumulative Deaths Categorization



Note: Losses / Damages data is provided by PDMAs / GBDMA / SDMA / Govt Depts and is **preliminary**.

## Projected Rainfall (mm) Next 48 Hours



## Forecasted Impact Next 24-48 Hours

- Balochistan.** **Mainly hot and humid weather** is expected in most districts. **Rain-wind / thundershowers** with **isolated heavy falls** expected in Khuzdar, Kalat, Lasbela, Awaran, Panjgur, Kech, Ziarat, Zhob, Barkhan, Musakhel, Sherani, Kohlu, Harnai, Naseerabad and Jaffarabad from **29<sup>th</sup> to 31<sup>st</sup> July** with **occasional gaps**.
- Khyber Pakhtunkhwa.** **Rain-wind / thundershowers** with **isolated heavy falls** expected in Dir, Swat, Kohistan, Malakand, Bajaur, Shangla, Battagram, Buner, Kohat, Mohmand, Khyber, Mansehra, Abbottabad, Galiyat, Haripur, Peshawar, Swabi, Nowshera, Mardan, Charsadda, Hangu, Kurram, Orakzai, Waziristan, Bannu, Lakki Marwat and DI Khan from **28<sup>th</sup> to 31<sup>st</sup> July** with **occasional gaps**.
- Punjab.** **Rain-wind / thundershowers** with **few heavy falls** expected in Rawalpindi, Murree, Attock, Chakwal, Tala Gang, Jhelum, Mandi Bahauddin, Gujrat, Gujranwala, Hafizabad, Wazirabad, Sahiwal, Jhang, Toba Tek Singh, Nankana Sahib, Chiniot, Faisalabad, Lahore, Sheikhupura, Sialkot, Narowal, Okara, Pakpattan, Kasur, Khushab, Sargodha, Bhakkar and Mianwali from **28<sup>th</sup> to 31<sup>st</sup> July** with **occasional gaps**. Furthermore, **rain-wind / thundershowers** expected in Bahawalpur, Bahawalnagar, DG Khan, Multan, Khanewal, Lodhran, Muzaffargarh, Kot Addu, Rajanpur, Rahim Yar Khan and Layyah from **29<sup>th</sup> July to 31<sup>st</sup> July** with **occasional gaps**.
- Sindh.** **Mainly hot and very humid weather** is expected in most districts. **Rain-wind / thundershowers** expected in Mithi, Sanghar, Umarnot, Tharparkar, Mirpurkhas, Thatta, Badin, Sujawal, Karachi, Hyderabad, Shaheed Benazirabad, Sukkur, Larkana, Jacobabad and Dadu from **29<sup>th</sup> to 30<sup>th</sup> July** with **occasional gaps**.
- Islamabad Capital Territory.** **Rain-wind / thundershowers** with **few heavy falls** expected from **28<sup>th</sup> to 31<sup>st</sup> July** with **occasional gaps**.
- Gilgit Baltistan.** **Mainly partly cloudy to cloudy weather** conditions. However, **rainfall** is expected in Diamer, Astore, Skardu, Gilgit, Ghanche, Shigar from **28<sup>th</sup> to 29<sup>th</sup> July** with **occasional gaps**.
- AJ&K.** **Rain-wind / thundershowers** with **few heavy falls** expected in Neelum Valley, Muzaffarabad, Rawalakot, Poonch, Hattian, Bagh, Haveli, Sudhnoti, Kotli, Bhimber, Mirpur from **27<sup>th</sup> (night) to 31<sup>st</sup> July** with **occasional gaps**.
- Flash flooding and landsliding** in hilly / mountainous regions of Balochistan, KP, GB and AJ&K
- Heavy rains may generate flash flooding** in local streams / nullahs.
- Heavy rains may cause urban flooding** in Islamabad, Rawalpindi, Peshawar, Lahore, Gujranwala, Sialkot, Sargodha, Faisalabad, and other urban areas.
- Rains-windstorms / lightning** may cause roof/wall collapse of kacha houses, electric poles, billboards and solar panels.
- Higher Temperatures & Rains** may trigger **GLOF Incidents** in vulnerable valleys of KP and GB

### Guidance Issued

- PDMA to ensure **early warning & prompt response** in **vulnerable areas** in light of forecasted conditions
- PDMA to undertake **regular public awareness on all media channels / social media** to maximise general public's **knowledge on risks associated with monsoon season**; heavy rains, urban flooding, flash flooding, landslides, etc.
- City / District Administrations** are to **ensure contingency plans** for areas vulnerable to flooding in urban centres, catering for **prompt de-watering operations in flooded areas**.
- NHA / FWO / Local C&W Depts** to **ensure pre-placement of machinery** and **timely restoration of damaged road linkages**.
- Rescue Services, Armed Forces** and leading **NGOs / CSOs** to **ensure availability of personnel / equipment** in the indicated areas & **be on stand-by for rapid response**.
- Ensure that **public avoid crossing nullahs** and **keep livestock away during adverse weather conditions**.
- Ensure that **public Does Not Venture Outside** during **Thunderstorms** and **Do Not Seek Shelter Under Trees** to **avoid risk of lightning strike**.
- Ensure that **public** undertakes **adequate measures** to **maintain** their **homes** from **adverse effects** of **heavy rainfall** in order to **avoid roof / wall collapses**.
- Additional **guidance** is available on **NDMA Website** and "**Pak NDMA Alert**" app available on Google **Play Store** and iOS **App Store**.

Pakistan Reservoirs Data (27 Jul - 0600 hours)		
Details	Tarbela Dam	Mangla Dam
MCL (Feet)	1,550.00	1,242.00
Dead Level (Feet)	1,402.00	1,050.00
Water Level (Feet)	1,516.92	1,199.20
Change Last 24 hrs (Feet)	+0.24	+0.40
Storage (MAF)	Max	5.809
	Present	3.975
Change Last 24 hrs	+0.012	+0.024
% Dam Filled	69.00	57.73
% Change Last 24 hrs	0.00	+0.33

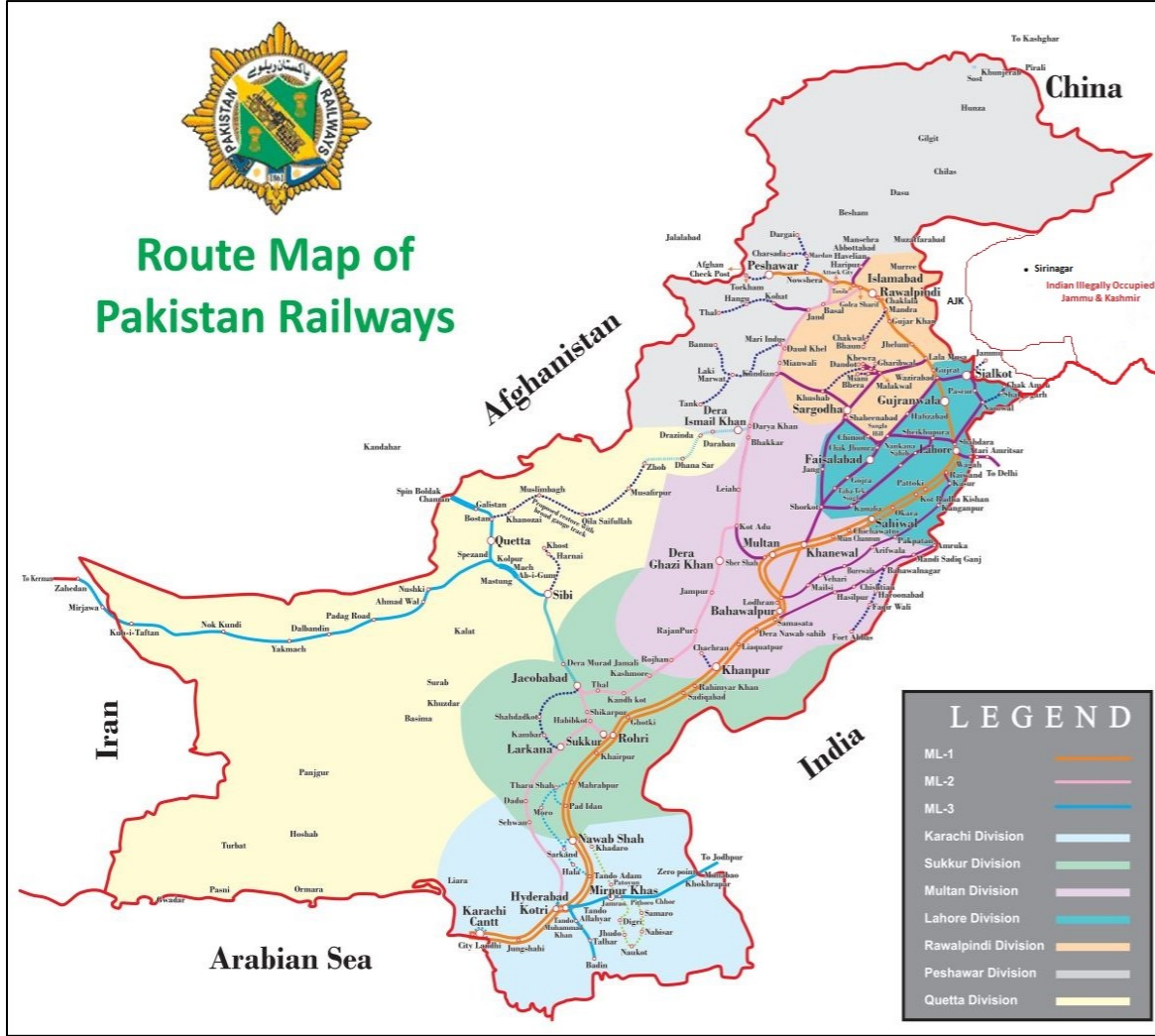
Data Source: WAPDA

FFD Discharge Report				
Recorded at: 27-Jul-2024 12:00 PST				
River	Site	Inflow	Outflow	
Indus	Tarbela	201,000	164,400	NORMAL
	Kalabagh	228,970	220,986	NORMAL
	Chashma	252,692	235,036	NORMAL
	Taunsa	222,665	196,613	NORMAL
	Guddu	182,506	143,157	NORMAL
	Sukkur	125,245	73,815	NORMAL
Kabul	Kotri	73,315	31,930	NORMAL
	Nowshera	48,600	48,600	NORMAL
	Mangla	24,000	12,000	NORMAL
Jhelum	Rasul	7,089	0	NORMAL
	Marala	60,174	32,924	NORMAL
Chenab	Khanki	53,909	46,009	NORMAL
	Q.Abad	42,141	22,616	NORMAL
	Trimmu	34,216	17,266	NORMAL
	Panjnad	13,880	0	NORMAL
Ravi	Jassar	5,507	5,507	NORMAL
	Shahdara	17,800	17,800	NORMAL
	Balloki	41,910	12,810	NORMAL
Sutlej	Sidhnai	22,666	6,866	NORMAL
	GS Wala	1,014	1,014	NORMAL
	Sulemanki	17,288	4,068	NORMAL
	Islam	2,926	826	NORMAL

Indian Dams Data (26 Jul - 0600 hours)			
Details	Bhakra	Pong	Thein
MCL (Feet)	1,680.00	1,390.00	1,732.00
Water Level (Feet)	1,601.46	1,316.47	1,615.11
Change (Feet)	+4.01	+2.92	-20.47
Storage (MAF)	Max	5.050	1.900
	Present	1.959	0.272
Change	+0.098	+0.099	-0.188
% Dam Filled	39	25	14
% Change	+2	+2	-10
2023 Position (%)	73	78	87

Data Source: PCIV

## National Railway, Highways / Motorways Network Status



- National Railway Network is **Fully Open**.
- National Highway & Motorway Network is **Open**, however following areas affected
  - S-2 Kohala to Muzaffarabad Rd – Blocked due to large-scale mud / landslide. **Heavy Machinery deployed at site and work underway. Traffic suspended.**